

OUR FEES

Tuition fees are payable in advance at the beginning of each term (formal arrangements to pay over the term are negotiable but not encouraged). Parents wishing to withdraw a student from ST GEORGE'S COLLEGE must give a full term's notice. If this is not done, a fee in lieu of notice will be charged.

For the latest school fees, please contact registrar@stgeorges.co.zw

Sundries include:

ICDL Card + 3 exams, flash stick & lanyard (one-off)
SDC subscription (per term)
Pupil accident insurance (annual)
Padlock
Name badge

Payment plan facility:

Available to all parents at a nominal cost, per student, per term (applicable only to tuition and boarding fees).
Swipe machine & Ecocash facilities, available at the Cashier's office.

All prices/fees are subject to change.

OUR DISCIPLINE

The Headmaster reserves the right to request the withdrawal of any student whose attitude or behaviour is judged to be seriously unsatisfactory or prejudicial to the best interests of the school or to the student's own self.

OUR CLINIC

The school runs a clinic which is administered by qualified nursing staff. All scholars are covered by the Schools' Accident Insurance Scheme. This is in addition to your own medical aid for your son, which we strongly suggest you maintain while he remains a student at HARTMANN HOUSE or ST GEORGE'S COLLEGE.

OUR ADMINISTRATION

ST GEORGE'S COLLEGE and HARTMANN HOUSE are maintained by the Prestige Trust of the Society of Jesus (Jesuits) of the Province of Zimbabwe. They are administered by a Board of Governors largely appointed by the Provincial Superior of the Jesuits.

The Rector of the COLLEGE and HARTMANN HOUSE (Vice-Chairman of the Board), oversees both schools on behalf of the Jesuits.

ST GEORGE'S COLLEGE and HARTMANN HOUSE have Headmasters appointed by the Board who manage the schools on behalf of that body.

Form 1 Application Process Step 1

You will need to pick up an Application Form and Prospectus from the Registrar at ST GEORGE'S COLLEGE during your son's Grade 6 year or first term of his Grade 7 year.

You must return this Application Form
+ a copy of your son's birth certificate
+ a copy of your son's Baptism Certificate (*Roman Catholics only*)
+ Application fee
to the Registrar at ST GEORGE'S COLLEGE

Please note that ST GEORGE'S COLLEGE accepts children of any religion, even though we are a Roman Catholic school.

Application Process Step 2

You will receive a form (FORM A) from ST GEORGE'S COLLEGE asking you to confirm whether your son is writing the Entrance Examination at ST GEORGE'S COLLEGE or not (FORM A will be sent out early May).

You need to return this form to ST GEORGE'S COLLEGE at the beginning of June.

Application Process Step 3

Your son will sit the Entrance Examination at ST GEORGE'S COLLEGE, on the first Saturday in July. The Examination has a Mathematics and an English paper.

You will need to collect an acceptance or regret letter from the Registrar at ST GEORGE'S COLLEGE approximately two weeks after sitting the Examination.

If accepted you will need to pay a non-refundable deposit at ST GEORGE'S COLLEGE to confirm your acceptance of the place **before the end of August.**

Application Process Step 4

All that is left is for you to collect your son's Handbook and 1st term's invoice **before the end of Term 3 of his Grade 7 year.**

For all application enquiries contact:
registrar@stgeorges.co.zw

OUR TUITION

ST GEORGE'S COLLEGE and HARTMANN HOUSE are members of the Association of Trust Schools (ATS), and the Headmaster of each belongs to the Conference of Heads of Independent Schools in Zimbabwe (CHISZ). Boys write the CHISZ Common Entrance Examination to Secondary Schools in July and the State Grade 7 examinations (ZIMSEC) in October. Boys move onto ST GEORGE'S COLLEGE at the end of Grade 7 through the Red Blazer Route. HARTMANN HOUSE is a Cambridge International registered School and uses the Cambridge Primary Curriculum.

ST GEORGE'S COLLEGE is a Cambridge International registered school and follows the syllabi of the Cambridge International Board culminating in the sitting of IGCSE and A Level Examinations.

AMDG

ST GEORGE'S COLLEGE

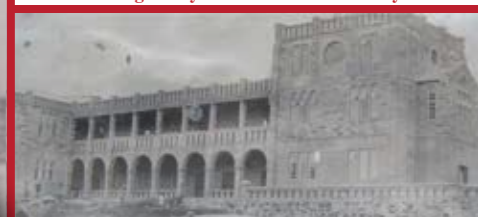
1896 - Bulawayo Boys Public School



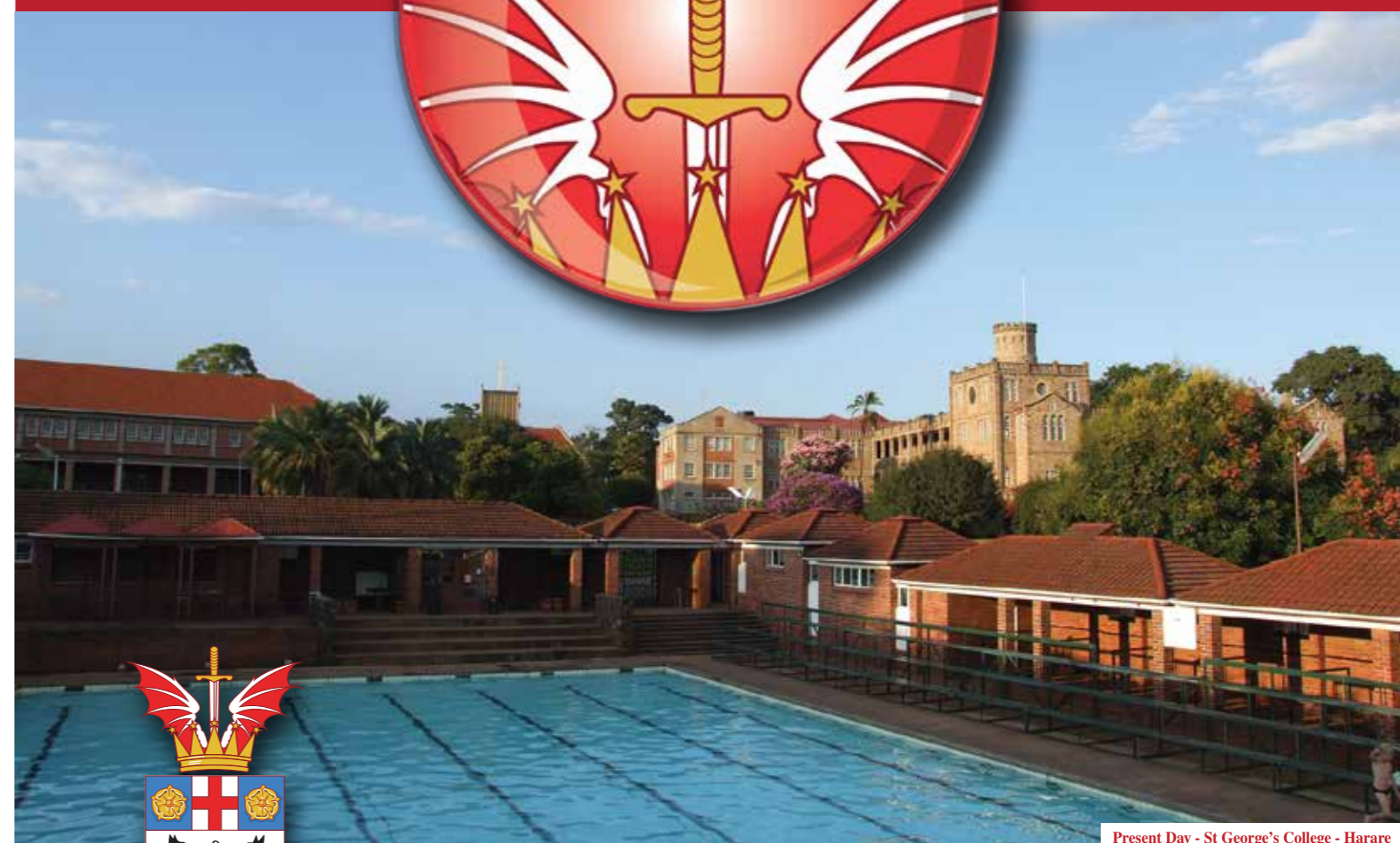
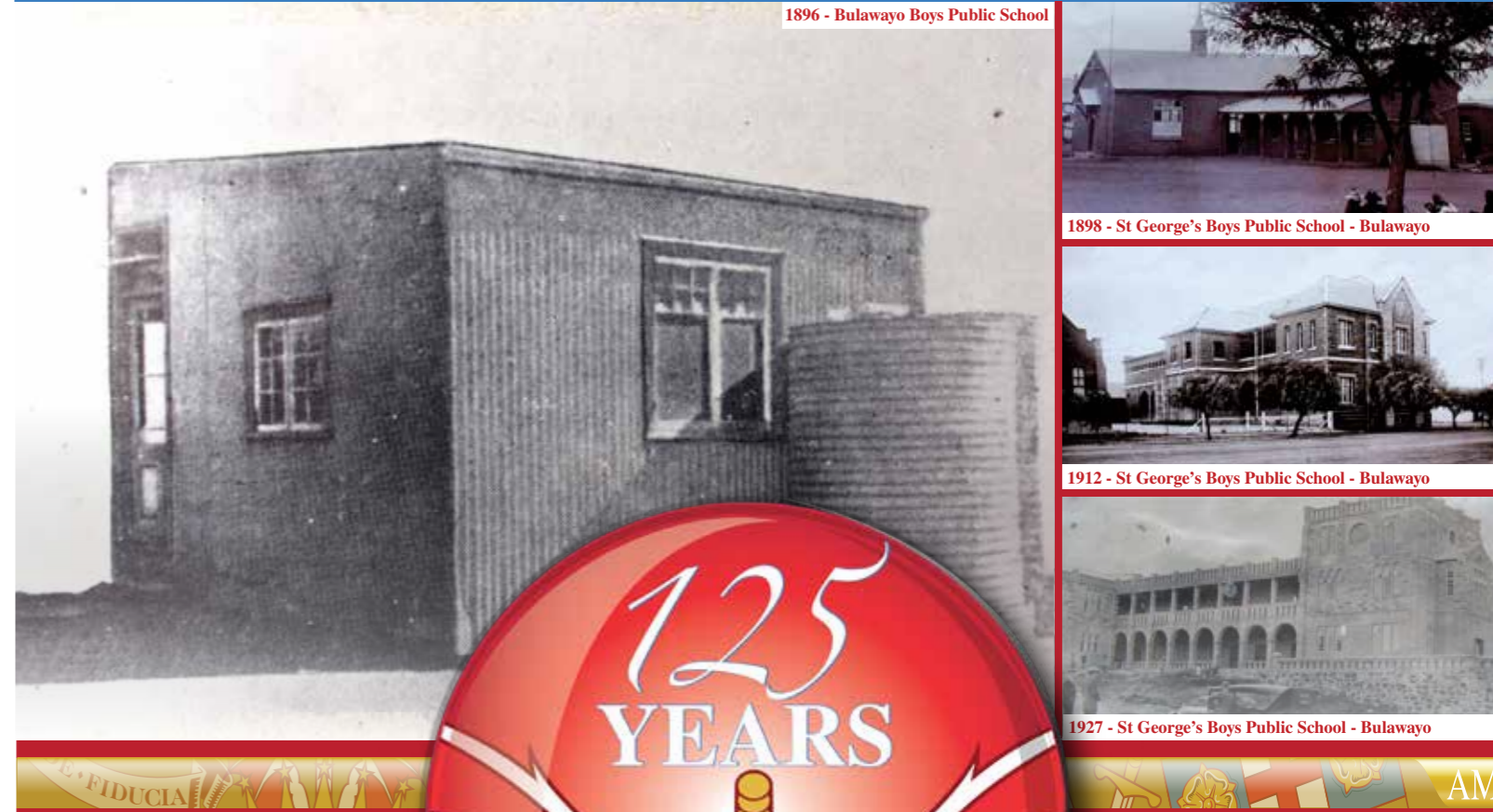
1898 - St George's Boys Public School - Bulawayo



1912 - St George's Boys Public School - Bulawayo



1927 - St George's Boys Public School - Bulawayo



Present Day - St George's College - Harare



Telephone: +263(4) 703595 / 704064 / 762994 | Mobile: 0772020314 / 08677020314 | Fax: 797648

email: registrar@stgeorges.co.zw

3 Borrowdale Rd

P Bag 7727 | Causeway | Harare

www.hartmannhouse.co.zw



Celebrating Faith, Family & Action

www.stgeorges.co.zw

www.stgeorges.co.zw

OUR COLLEGE

Now 125 years old, St George's College is the oldest boys' School in Zimbabwe and remains one of Africa's pre-eminent educational institutions. It is a Roman Catholic School that is inspired by the vision and mission of the Society of Jesus (the Jesuits). As the third and final step in the Red Blazer Route, comprising the Paul Miki Learning Centre (Grades 0 – 2), Hartmann House (Grades 3 – 7) and St George's College (Forms 1 – 6), the College has a significant history and a deep sense of tradition and culture. It enjoys an enviable environment with a plethora of outstanding facilities. The Red Blazer Route has a record of excellence on many levels, including producing 29 priests - 13 of whom are Jesuits, 35 Rhodes' scholars, Olympians and accomplished Old Georgians in every sphere of the world, and all of this stands upon the strength and stability of its Jesuit ethos.

OUR MISSION

At the centre of a Jesuit education stands the phrase "Men and Women of God, Men and Women for and with Others". A former Jesuit Superior General popularised that phrase and our students are very aware that this is what separates them from their peers in other educational establishments.

Our Mission is to instill a universal development of the "whole" of a young man's / woman's character and conscience

Our efforts to develop the whole person sees us emphasising the four Cs of Jesuit Education; where we are forming men and women of **Conscience, Competence, Compassion and Commitment**. Young men and women are educated, nurtured and matured to see beyond their own achievements to **the importance of service to others** in their communities. This is the spirit, the ethos of a true Jesuit education instilled in every PAUL MIKI, HARTMANN HOUSE and ST GEORGE'S COLLEGE student. From late infancy, through childhood to early adulthood, the spirit of service to the community and to the family extending to national and even international level, is cultivated by the Jesuits through various activities that are consciously geared at developing men and women who can strike a healthy balance between the needs of self, and the needs of others.



ST GEORGE'S COLLEGE
EXAM RESULTS 2020
A LEVEL 100%
AS LEVEL 98%
IGCSE LEVEL 90%



OUR COLLEGE SPORTS

ST GEORGE'S COLLEGE is a powerhouse in the Zimbabwe sporting arena producing national athletes across numerous disciplines year after year. The College offers many individual and team sports such as:

Athletics, Basketball, Cricket, Cross-Country, Hockey, Golf, Rowing, Rugby, Soccer, Squash, Swimming, Tennis, Volleyball, and Water Polo

Students are required to participate in at least one sport every term.

It is through sport that Christian values such as honesty, hard work and collaboration are taught and practised under the supervision of competent teaching staff and professional coaches.



OUR CULTURAL ACTIVITIES

ST GEORGE'S COLLEGE offers arguably the largest choice of Cultural Activities from any School in Zimbabwe from the following categories:

Language (2 Clubs), Academic (13 Clubs), Art & Media (2 Clubs), Service (7 Clubs), Music (11 Clubs), Speech & Drama (6 Clubs), Dance (1 Club), Sporting (10 Clubs) and Media Lab (3 Clubs).

Students are required to attend one club per term.

Some of these clubs already offer a valuable service to the school while others provide students with skills that they can apply to the world beyond. This is in keeping with the Jesuit tradition which saw the inclusion of theatrics in the curriculum as far back as the 16th century.



OUR STUDIES

Over a student's school career, his entry level (Form I) subject choices will evolve into IGCSE (O Level) and A Level choices. The courses provided lead to Cambridge International Examinations, IGCSE, AS and A Level. The pathway that a student follows is determined by the School, according to his age, ability and aptitude. IGCSE examinations are taken in Form IV, while AS Level in Lower VI and A Level Examinations are taken in Upper VI.

Beyond the requirements of the academic curriculum, our Jesuit Education ensures that students are exposed to a discussion of values connected to the content they may be covering in class.

Entry Level (Form I & II)

Form I is divided into five mixed ability groups, with set grading taking place at the end of the academic year.

IGCSE Level (Form III & IV)

When students enter Form III they are reset according to the results of the Form II internal examinations and they remain in these groups for their IGCSE levels. Forms III & IV comprise two-year coursework that culminates in an International General Certificate of Secondary Education Examination (IGCSE), set by the University of Cambridge. This is the equivalent to what used to be called the O Level Examination.

AS and A Level (Lower and Upper VI)

Lower and Upper VI is a two year course in preparation for A Level. Entry into A Level is not automatic, but depends on the successful completion of IGCSE Level.

ICDL - International Computer Driving Licence
ICT - Information & Communication Technology
IT - Information Technology
D&T - Design & Technology

SGC SUBJECT PATHWAY & CHOICES

ENTRY LEVEL Subjects Form I & II	IGCSE Subject Choices Form III & IV	AS & A Level Subject Choices Lower and Upper VI
Art	Art	Accounting
Dramatics	Accounting	Art
English	Biology	Biology
French	Business Studies	Business
Geography	Computer Science	CISCO
History	Chemistry	Computer Science
ICDL	D&T (Electronics)	Chemistry
Mathematics	D&T (Graphics)	D&T
Music	Drama	Economics
Physical Education	English Language	English Language
Shona	English Literature	English Literature
Science	French	French
Religious Education	Geography	Geography
Global Perspectives	History	History
	ICT	IT
	Mathematics	Mathematics
	Physics	Physics
	Physical Science	Physical Education
	Physical Education	Religious Education
	Religious Education	
All subjects are compulsory in Form I.	Subject Choices are set driven. A set is a grouping of boys based on test results at the end of Form II. All pupils to take a minimum of nine subjects. Compulsory Subjects are Mathematics, English Language and Religious Education. NOTE Religious Education is not an examined subject	Subject Choices are determined by IGCSE results. Students may take up to five subjects in Lower VI and three subjects for Advanced Level in Upper VI. Compulsory Subject is AS English Language. NOTE Religious Education is not an examined subject

All images courtesy of SGC Photography Club



Celebrating Faith, Family & Action

www.stgeorges.co.zw